

HOW TO READ YOUR WATER METER

INCORRECT READ

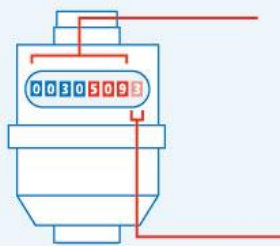
An incorrect read can be identified by a verification being less than the meter read issued on the bill. The following worksheet from Gold Coast City Council shows you how to read and keep track of your water consumption.

How to read your water meter

Your water meter is normally located at the front of your property.

Black numbers represent kilolitres and are used for billing.

The red numbers on your water meter represent litres. To calculate your daily water use, please follow the instructions below.

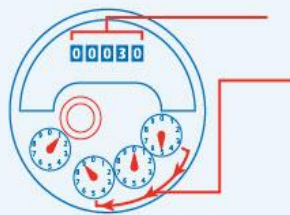


Numbers only meter

1. Day one, record all numbers that you see here. Note the time of day.
2. Day two, repeat step 1. Conduct this reading at the same time as you did reading on day one.
3. Subtract the numbers recorded on day one from day two. This is your household's daily water usage.

Please note, if there are four red digits on the water meter, the last digit (on the far right) is a tenth of a litre. In these instances, do not record the last red digit.

or



Numbers and clock meter

1. Day one, record all numbers that you see here. Secondly, record numbers found here. Record the first three red dial numbers in a clockwise direction, that is, right to left. Note the time of day.

Both steps should provide you with a number similar to the diagram example 00305093.

2. Day two, repeat step one. Conduct this reading at the same time as you did reading on day one.
3. Subtract the numbers recorded on day one from day two. This is your household's daily water usage.

Day one: Record numbers from your water meter as per instructions above.

_____ L

Day two: At the same time as day one, record numbers from your water meter as per instructions above.

_____ L

Subtract the number found on day one from the number found on day two.

Day two reading _____ L - Day one reading _____ L =

This is your household's daily water usage.

_____ L